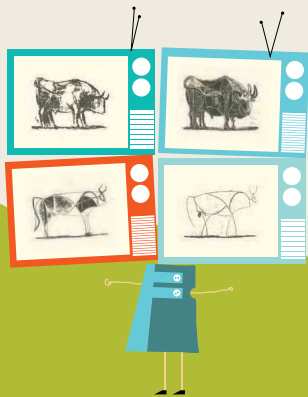


8. IN TLAA TICMATI OME TLAHTOLLI OC ACHI CUALLI TITLAIXMATIZ, TIMOMACHILIZ HUAN TITLAHTOZ NOCHIPA

In aquin quimati ome nozo yei tlahtolli oc achi cualli tlanemilia ipampa inon tlatatl ome nozo yei tlamantica quiixmati, quimachilia, quinotza huan quinemilia totlalticpac. Mah ticnemilican in totzontecon nozo tocuatexxo yuhquin ce chichahuac tepoztlamahuizolli tlein quipia miac canales, ihquin itzontecon in aquin quimati zan ce tlahtolli, nochipa quipia zan ce canal huan nochipa zan ihcuitic moita.



9. IPAN MEXIHCO TOTLALNANTZIN ONCA 68 MACEHUALLAHTOLLI ICA 364 TLATLAMAN IN QUENIN TLAHTOLO.

Ipan cehce macehualtepemeh nican totlalnanzin, miaqueh tomacehualicnihuan quimatin ome tlahtolli. In tlaa ipan Mexihco totlalnanzin nohhuayan huan nochipa timononotzazque ica tomacehuallahtol, tinochtin ticmatizque coyotlahtolli huan ce macehuallahtolli.

10. XICTLAZOHTLA MOTLAHTOLTZIN HUAN XICMAHUIZTILI INANTLAHTOLTZIN OCCEQUINTIN TOICNIHUAN IPAMPA MELAHUAC QUIPIA IPATIUH.

Cehce tlahtolli teixnextilia occe tlanan in quenin moita totlalticpac huan in quenin ipan nemohua; yehica cehce tlahtolli melahuac quipia ipatiuh ipan totlalticpac huan monequi ticpiazque nochi tlahtolli ipampa toaxca.

In tlaa amo ticmatizque ipatiuh inon nepapan tlahtolli niman amo hueliz timotlepanitazque nion no ticmahuiztilizque in macehuallahtolli ipan Mexihco totlalnanzin, yehica miaqueh quinixtlahuelitan tomacehualicnihuan.

Monequi nohhuayan ticchayahuzque tomacehuallahtol, mah momati huan mah tlahtolo nochcan, ihcon ticmahuiztilizque huan ticnextilizque ipatiuh.

iTinochtin huel ticpalehuizque mah mochayahua huan mah momati totlahtol!



¡XIQUIMATI!
¡XICMACHIL!
¡XIMACEHUALLAHTO!



In tlaa ticnequi tiquitaz, ticcaquiz huan ticmatiz oc achi miac itechpa tomacehuallahtol, xiquixpohua:
www.educacionintercultural.unam.mx
www.inali.gob.mx
© INALI-UNAM, 2013

Oquichihque: Leopoldo Valiñas, Luz Lazos y María de Lourdes Ros

Tlayectlaliztli huan tlaixcopincayotl: Carlos Villajuárez

Traductor: Fausto Aguilar Domínguez
Náhuatl del Centro

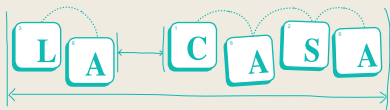


10 TLAMANTLI ITECHPA TOTLAHTOL IN TLEIN NOCHTIN TLAHTOHQUE MONEQUI QUIMATIZQUE



1. TOTLAHTOL YEHHUATL CE TLAMANTLI IN TLEIN MOXELOHTOC HUAN QUIPIA IN TLEIN QUIIHTOZNEQUI

Totlahtol yehhuatl ce tlamantli in tlein moxelohtoc huan quipia tlatlaman tlanahuatilli in tlein tlanahuatia quenin mononotza huan tlein quiihtoznequi ce hce itlahtol.



2. TOTLAHTOL NECI YUHQUIN CE TLAMAN PATOLLI

Totlahtol neci yuhquin ce tlamán patolli ipampa quipia ce amatl nozo ce tlapachtli in ipan mahuiltia, quipia tlapaltica etzin, quipia itlanahuatil in tlein quihtoa quenin patoz, tlatlamantica hueliz tlatlaniz huan cequntin mahuiltianih oc achi tlanamiquinih, occequntin oc achi chicauhqueh huan occequntin oc achi yolpactoque itech patolli.

3. TICIXTOQUE TOTLAMATILIZ, TONEMACHILIZ HUAN TONEZCAYO IPAMPA TOTLAHTOL

In totlahtol tlatlaman moxelohtoc:

TLAMATILIZTLI (nochi tlein ticmatin): techcahuilia titlanemilian huan tiquixmatin nochi Cemanahuac totlalticpac.

NEMACHILIZTLI (nochi tlein ticmachilian): techcahuilia ticmachilian yolpaquiliztli huan tlazohtlaltzli.

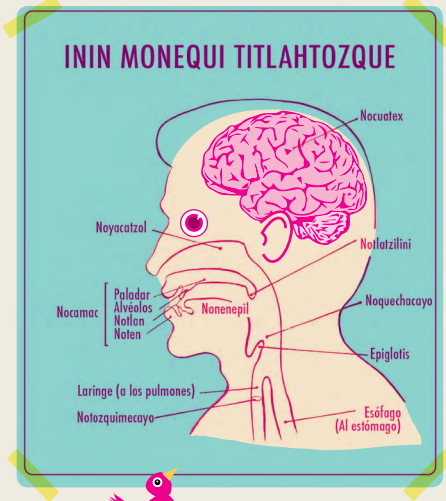
NEZCAYOTL (in toixco, in toyolo): techcahuilia teixpan timoixpantizque itechcopa toixco huan toyolo, ihcon techixmatizque.



4. IN AHUILIZTLI MOAHCI ITECHCOPA TOTLAHTOL

Itechcopa totlahtol huel tiquixmatiz nochi totlalticpac huan tonemiliz, huel titetlazohtlaz, huel ticnextiliz mocualancayo, huel ticahuiltiz ica totlahtol, huel tizazanilo, huel camanaltica tihuetzcas, huel tiamapohuaz huan noi hqui huel ticahcicamatiz in aquin mocamatzactoc.

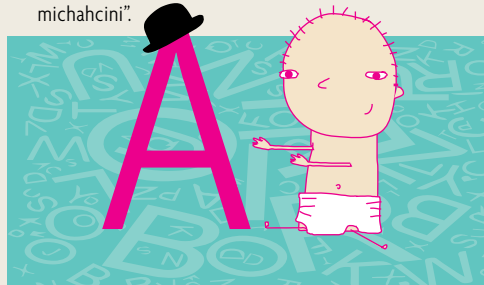
5. IPAMPA TLATLAMAN INEZCAYO TONACAYOTZIN TEHHUAN TITLACAH HUEL TIMOMACHTIZQUE IC TITLAHTOZQUE ZAN TLEIN NANTLAHTOLLI



6. TINOCHTIN HUEL TIMOMACHTIHQE TITLAHTOAN IPAMPA ACAH TECHNOTZA

Ce impiltzin in tenantzin, in tetahtzin in tlein nontzitzintin, nacaztapaltzitzintin hueliz tlahtoz in tlaa acah quinextiliz huan quimachtiz quenin, ce nezcaoytl, ihcuac iteixmatcahuan quinotzan. Totlahtol oupa moxelo hua: ce itoca dimensión geográfica, inin quihtoznequi, nochi tlein tiquihtoan, quenin tiquihtoan huan tlein ticnequin tiquihtoan zan teixnextilia canin toaltepetzin, canin tiehuan; occe itoca dimensión social, inin quihtoznequi, quenin titlahtoan teixpan, ipampa occe tlamán tlahtoa ce hce tlatatl in tlaa cihuatl nozo oquichtli, in tlaa conetzin nozo huehuetzin, in tlaa oc achi tlamatini nozo amo, in tlaa macehualli nozo amo ihcon.

Ce nezcaoytl: "tlahtoa yuhquin ce tomine", "tlahtoa yuhquin ce tlanahuatiani", "tlahtoa yuhquin ce michahcini".



7. AYOCMO MOMATI QUEZQUI TLAHTOLLI HUELIZ QUIMATIZ IN TACATL, HUELIZ MOMACHTIZ NEPAPAN TLAHTOLLI

Tinochtin huel timomachtizque occequin nepapan tlahtolli, amo mopohua in tlaa ticocone nozo tihuehueyih, in tlaa ticmatin tiamapohuan, titlahcuiloan nozo amo ihcon. In coconeh oc achi amo ohui momachtizque. In tlaa ce conetl quinotzazque ica zan ce tlahtolli, niman zan ce tlamán tlahtoz nozo zan ce tlahtolli quimatiz. Yecch, in tlaa inon conetl quinotzazque ica ome nozo miac tlahtolli, niman nochi tlahtolli quimatiz huan ihcon tlahtoz nochipa. In conetl in tlein quimati ome nozo miac tlahtolli amo mocuapoloa ihcuac tlahtoa ica ce hce tlahtolli in tlein quimati, amo quipia necuelmololli ihcuac momachtia itechpa inon nepapan tlahtolli. ¿Catlein tlahtolli ticmatí? ¿Cox ticmatí quezqui tlahtolli onca inahuac moaltepetzin?